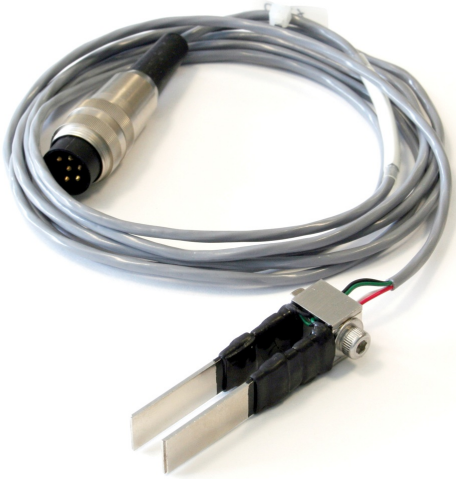


DATA SHEET

Displacement Transducer for Measurement of Crack Opening



Clip gauge transducer for CMOD test (82-P0331/E)

General description

This transducer is used for determining the Crack Mouth Opening Displacement (CMOD) conforming to EN 14651. The transducer have to be positioned over the notch sawn previously into the test beam.

This test has to be performed with a suitable flexural frame having proper stiffness and capacity as, for instance, our models 50-C15xx/FR or 50-C17xx/FR, and a control console capable of applying load in displacement control as our model MCC or Automax Multitest.

Standards

- EN 14651

Specifications

Measuring capacity: 5 (3 to 8) mm

Rated output: 2.5 mV/V (5000×10^{-6} strain)

Sensitivity: 1000×10^{-6} strain/mm

Non linearity: 1%RO

Temperature range: 0 to 40°C

Input/output resistance: 350 ohm

Recommended exciting voltage: less than 2 V

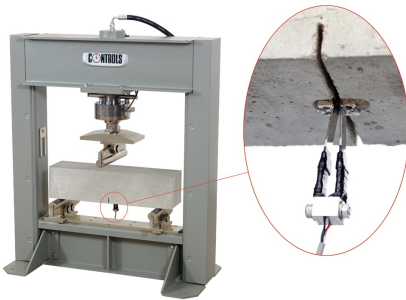
Allowable exciting voltage: 10 V

Input/output cable: 3 mmdia., 0.09 mm^2 , 4 core cable, 2 m

DATA SHEET



CMOD test arrangement



CMOD test on the 200kN flexure frame C1511/FR

Products

82-P0331/E

Displacement transducer for measurement of crack opening, measuring range 3-8 mm, sensitivity 2,5 mV/V. Supplied with fixing jigs (10 pcs.)

Accessories and consumables

82-P0331/E1

Fixing jigs (20 pcs.) for P0331/E transducer